



**Everybody**

# Video



C:\Users\hp\  
top\Juhti\flower rec



**S. Juthi Al Saki**

Junior Instructor(Tech) Computer  
Mymensingh Polytechnic Institute

**Subject: Programming Language-3(6653)**

**Technology: Computer**

**Semester:5<sup>th</sup>**

**Shift: Both**

# Learning outcome

**At the end of this session learner's will be able**

**To define visual Program.**

**To identify the components of VB.**

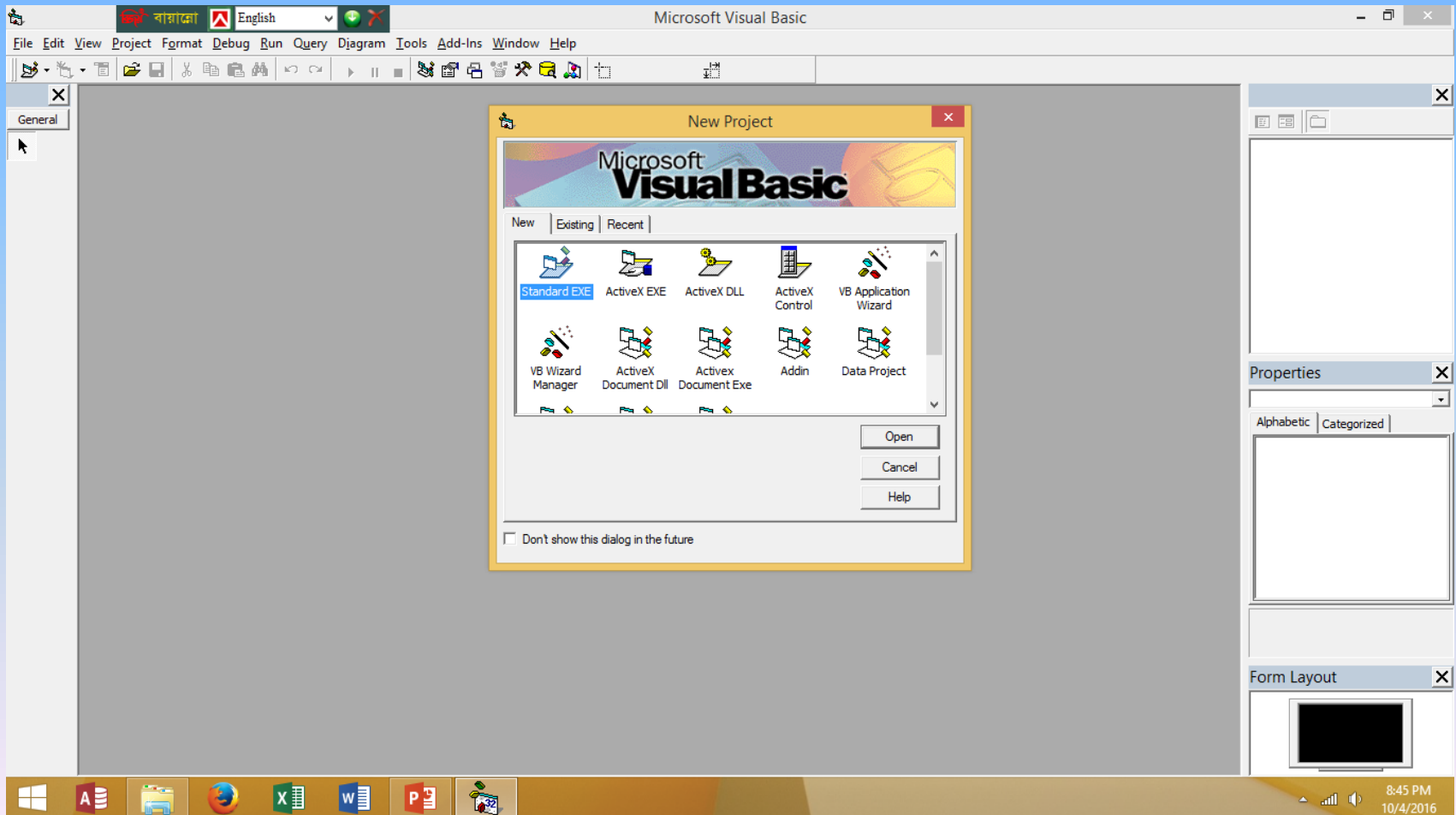
**To explain the use of VB.**

**To draw the various types of object .**

# Program No:01

Demonstrate with the overall layout of the visual basic(VB) environment and development tools

Open Visual basic program. Then click on open.



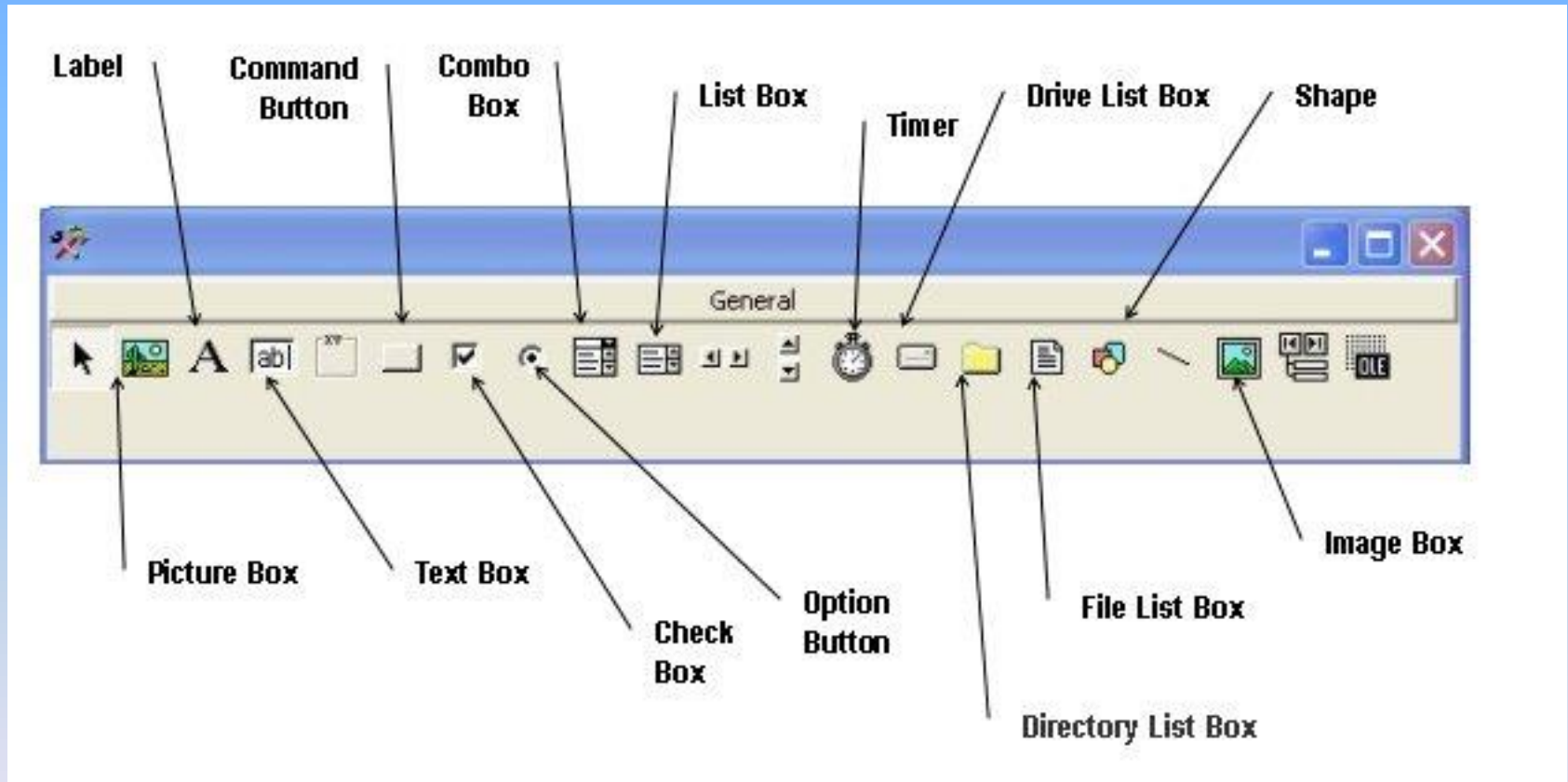
# Form Window:

The image shows the Microsoft Visual Basic IDE in design mode. The main window is titled "Project1 - Microsoft Visual Basic [design] - [Form1 (Form)]". The menu bar includes File, Edit, View, Project, Format, Debug, Run, Query, Diagram, Tools, Add-Ins, Window, and Help. The toolbar contains various icons for file operations, editing, and running. The central area is a design grid for "Form1". On the left is a "General" toolbox with icons for mouse, text, shapes, and OLE. On the right is a "Project - Project1" tree view showing "Project1 (Project1)" > "Forms" > "Form1 (Form1)". Below that is the "Properties - Form1" window, which has tabs for "Alphabetic" and "Categorized". The "Categorized" tab is active, showing a list of properties for "Form1 Form".

Form1 Form	
Moveable	True
NegotiateMenus	True
OLEDropMode	0 - None
Palette	(None)
PaletteMode	0 - Halftone
Picture	(None) ...

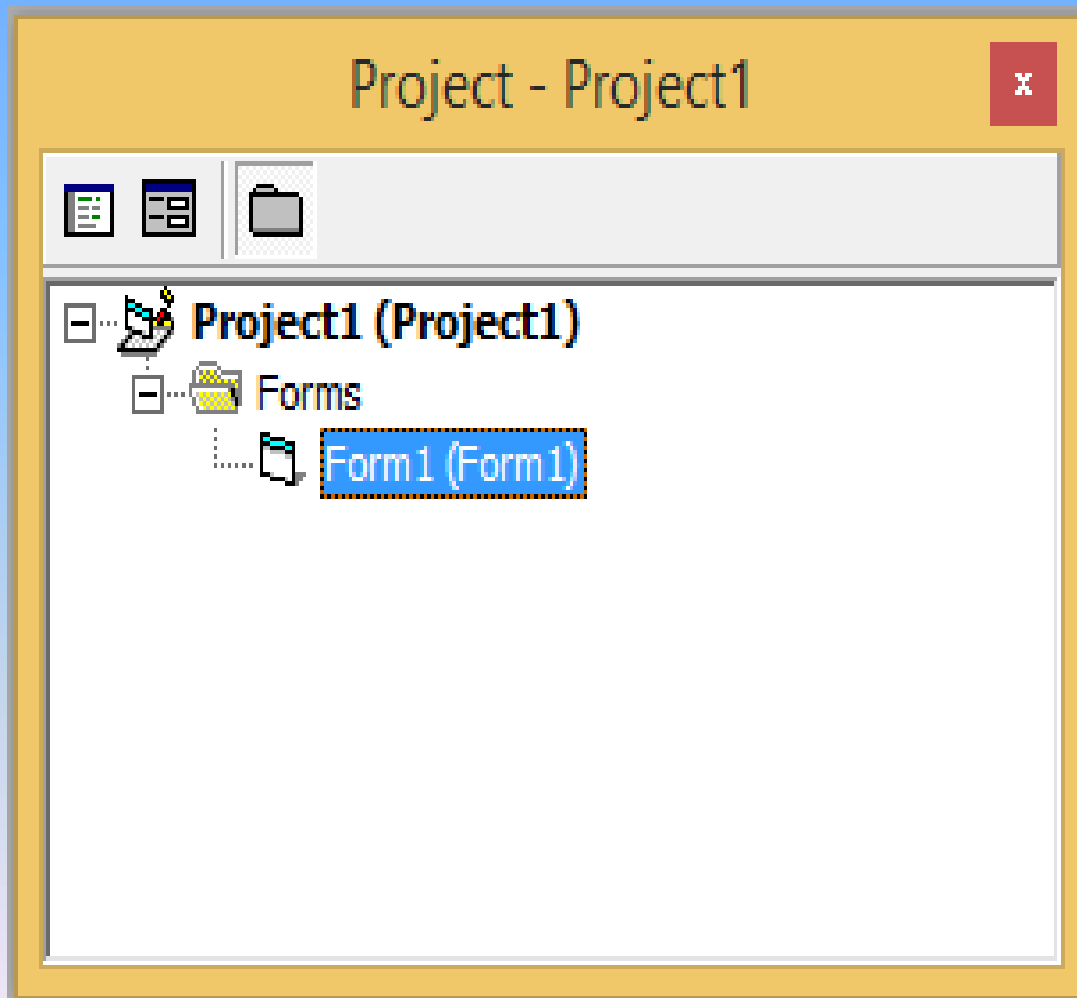
Below the properties list is a "Picture" section with the text: "Returns/sets a graphic to be displayed in a control." At the bottom of the IDE is the Windows taskbar with icons for Start, File Explorer, Internet Explorer, and Visual Basic. The system tray shows the time as 9:02 AM on 9/25/2016.

# Object List/Controls





# Project Explorer:



# Properties window:

Properties - Form1

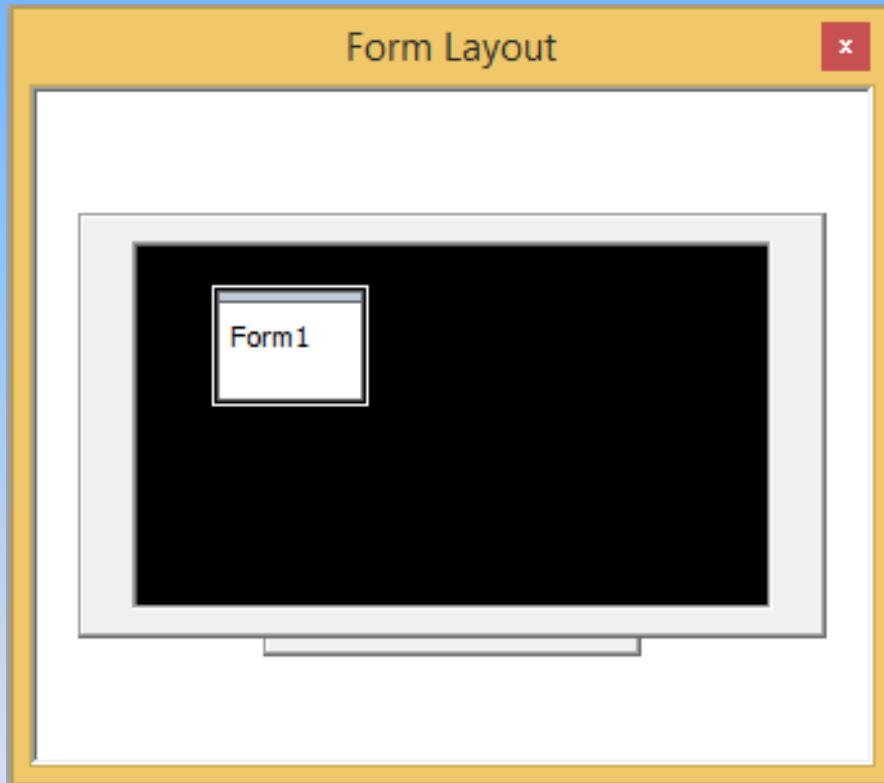
Form1 Form

Alphabetic | Categorized

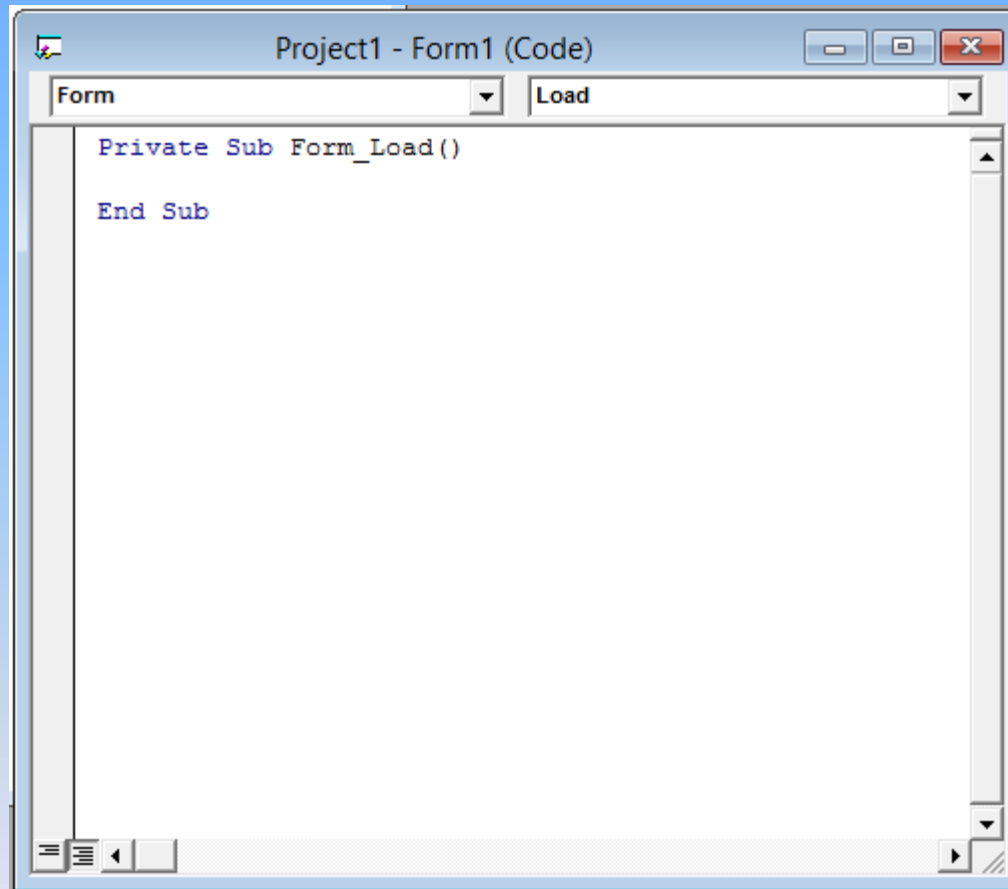
(Name)	Form1
Appearance	1 - 3D
AutoRedraw	False
BackColor	<input type="checkbox"/> &H8000000F&
BorderStyle	2 - Sizable
<b>Caption</b>	Form1
ClipControls	True
ControlBox	True
DrawMode	13 - Copy Pen
DrawStyle	0 - Solid
DrawWidth	1
Enabled	True
FillColor	<input checked="" type="checkbox"/> &H00000000&
FillStyle	1 - Transparent

**Caption**  
Returns/sets the text displayed in an object's title bar or below an object's icon.

# Form Layout



# Code Window:



The image shows a screenshot of a code window from a development environment. The window title is "Project1 - Form1 (Code)". At the top, there are two dropdown menus: the first is set to "Form" and the second is set to "Load". The main area of the window contains the following code:

```
Private Sub Form_Load()  
  
End Sub
```

The code is displayed in a monospaced font with syntax highlighting. The window has standard Windows-style window controls (minimize, maximize, close) in the top right corner and a scroll bar on the right side. The bottom of the window shows a toolbar with icons for undo, redo, and other editing functions.

# Questions:

- What is form?
- What is IDE?
- Say two controls name.
- Say some properties name.

# Home work

- Write a report.

Demonstrate with the overall layout of the visual basic(VB) environment and development tools

## Next Program:2

Perform the development of simple new application using visual basic which contain at least two controls such as textbox, command button etc.

ধন্যবাদ

THANKS

*Clubs.com*

The End

Plasma I. Bung